

## Summary:

The monitoring of EUR procedures is a T&G initiative

We are actively monitoring across GP and hospital care to ensure that the procedures that we do, using the evidence that we know, the patient will benefit.

GP referrals are being monitored

Consultant procedures are being monitored

For GPs, all listed procedures will require authorisation by the EUR monitoring team before onward referral [tgccg.eur@nhs.net](mailto:tgccg.eur@nhs.net)

If this is not completed the referral will be returned

If a referral for an EUR listed procedure, or an indication that this is likely, is sent to the provider and the referral does not have the EUR monitoring team APPROVAL notification, the referral will be returned to the GP

Please take time to look at this because if the correct procedure is not followed it will add delays to the patient journey

An information leaflet for patients has been developed for your use.

## Effective Use of Resources update

We are aware that as a health and social care economy we carry out a higher number of Effective Use of Resources (EUR) procedures than other areas in Greater Manchester. In light of this the Single Commissioning Function (SCF) and Tameside and Glossop Integrated Care Foundation Trust (ICFT) have agreed to be more stringent in ensuring only those patients who fully meet the criteria receive EUR procedures.

From 1<sup>st</sup> June 2017 all procedures that are listed as Monitored Approval will be subject to authorisation by an EUR Monitoring Team in either the CCG or the ICFT.

The summary guidance and the request proformas can be found on your clinical system. For those using EMIS within the consultation, searching for the name of the policy or procedure within the documents section will bring up the relevant proforma. This can be electronically completed, should pre-populate, and can be saved within the consultation to be emailed.

## Process

There is a process at the GP side and a process at the Consultant side – if the consultant decides on the procedure they should seek approval, not refer back to the GP. Referrals that indicate a procedure will be rejected from the provider if the correct process is not followed.

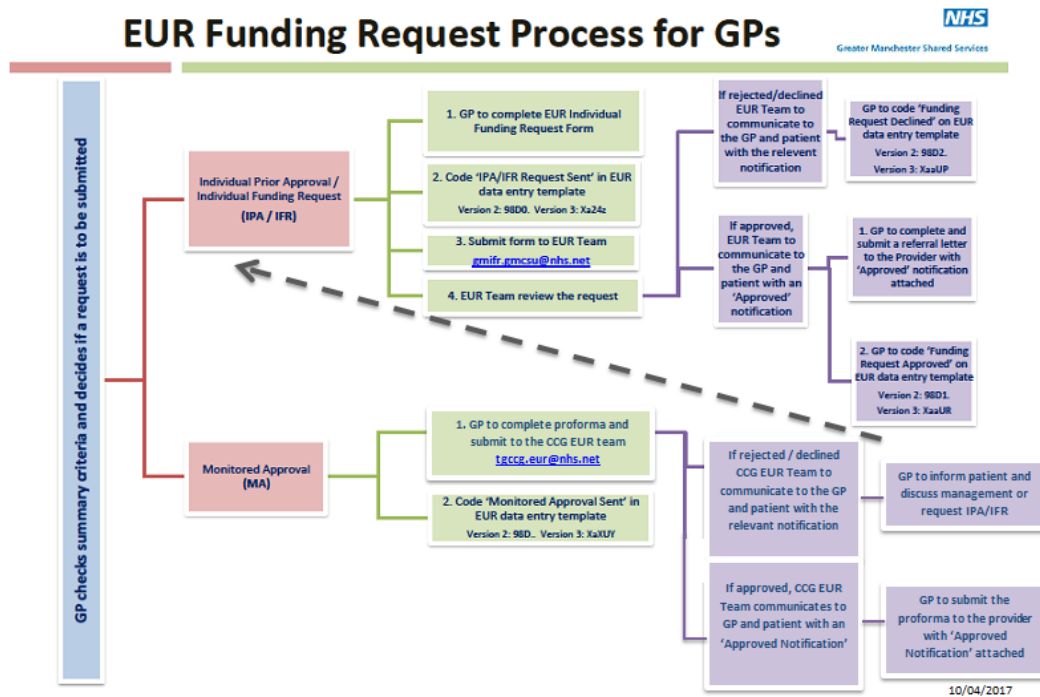
GP process:

Any procedure that is monitored approval requires referral on the relevant electronic proforma to the CCG EUR Monitoring Team via email [tgccg.eur@nhs.net](mailto:tgccg.eur@nhs.net).

The EUR Monitoring Team at the CCG has been expanded with a new team member who will monitor all of the GP EUR referrals to ensure the criteria are met. The CCG EUR Monitoring Team will

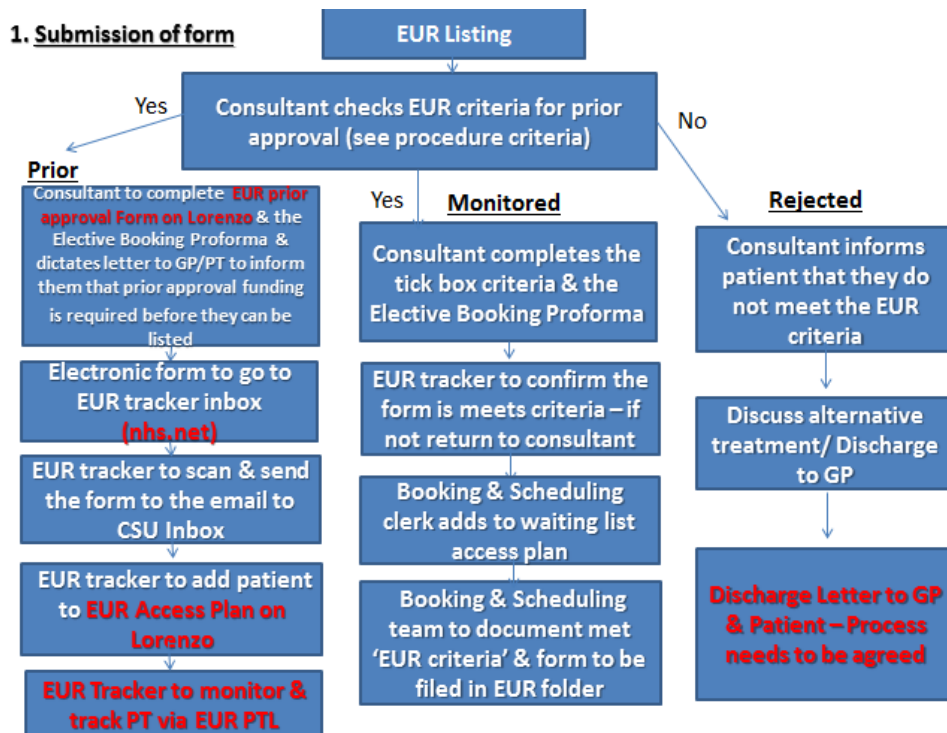
then issue an authorisation number within 24-48 hours so that the GP can make a referral to the provider. We are looking at ways in which the CCG Monitoring team can initiate the e-referral booking.

If the procedure requires IFR / IPA then the GP must apply directly to GMSS for funding, on the relevant electronic proforma, before referring to the provider.



#### Consultant Process:

If the GP refers to the provider for an opinion and the consultant decides a procedure under EUR is required then the consultant must follow the process to ensure that the criteria is met before monitored approval procedure is authorised by the internal ICFT Tracker, or they must seek funding from GMSS for procedures that are IFR / IPA. They will not refer back to the GP to complete the funding process.



### Rejected referral letters

Any procedure that indicates a procedure and is referred to a provider without an authorisation code will be rejected in the form of a letter. The GP will have to follow the correct process and re-refer the patient accordingly.

[Monitored Approval Reject Letter](#)

[Prior Approval Reject Letter](#)

### More information

Further details can be found on the [policies page](#) and on the [CCG website](#) 'clinical area – EUR' Information leaflet on procedures of [Low Clinical Value](#) can also be found on the website

For queries or comments please contact Mandy Ostell, CCG EUR Manager via [tgccg.eur@nhs.net](mailto:tgccg.eur@nhs.net) or Dr Naveed Riyaz, EUR Clinical Lead